



# 1-1/4" P-TRAPS WITHOUT CLEANOUT TECHNICAL SPECIFICATION

Job Name _____	Item # _____
Location _____	
Engineer _____	Contractor _____
PO # _____	Tag _____
Representative _____	

## SPECIFICATIONS

Dearborn Brass 1-1/4" Brass Tubular P-Trap without Cleanout are designed for use in tubular drain applications. Available in 17, 20 or Budget Gauge Brass. Options include Brass Nuts, Deep Flange, Longer Wall Tube and Ground Joint.

## DESCRIPTION

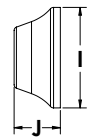
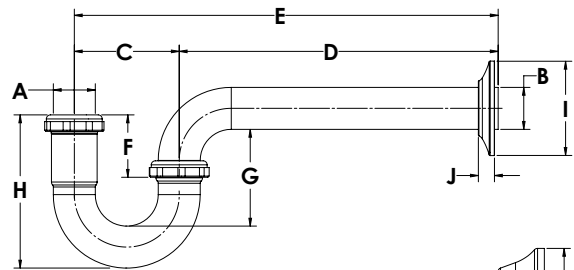
- Chrome Finished
- 1-1/4" P-Trap Without Cleanout
  - (1) Metal Flange
  - (1) Quarter Bend
  - (1) J-Bend
  - (2) Rubber Washers
  - (2) Nuts

## APPROVALS AND LISTINGS



## DIMENSIONS

[A]:	Inlet Size	1.25"	[F]:	Approximate Slip	1.8"
[B]:	Outlet Size	1.25"	[G]:	Approximate Seal	3.3"
[C]:	Length C	3.1"	[H]:	Approximate Height H	4.3"
[D]:	Length D	See Chart A.1	[I]:	Flange Dimension	See Chart A.2
[E]:	Length E	See Chart A.1	[J]:	Flange Dimension	See Chart A.2



Option: Deep Flange

### A.1 - WALL TUBE SIZES

	7.5" Wall Tube	9.5" Wall Tube	10" Wall Tube
<b>Length D:</b>	7.5"	9.5"	10"
<b>Length E:</b>	10.6"	12.6"	13.1"

### A.2 - FLANGE DIMENSIONS

	Flange	Deep Flange
<b>Flange Diameter I:</b>	2.8"	3.0"
<b>Flange Depth J:</b>	0.4"	1.4"

Access BIM/Revit content through [www.oatey.com](http://www.oatey.com)



# 1-1/4" P-TRAPS WITHOUT CLEANOUT TECHNICAL SPECIFICATION

## PRODUCT SELECTOR

1-1/4" P-TRAP WITHOUT CLEANOUT					
✓	Product Number	Size	Description	Carton Quantity	Wall Tube Center Length
	2700-1	1-1/4"	P-Trap - Budget Ga.	25	7.5"
	2700A-1	1-1/4"	P-Trap - Budget Ga. w/9.50" Wall Tube	25	9.5"
	2700DF-1	1-1/4"	P-Trap - Budget Ga. w/Deep Flange	25	7.5"
	700-1	1-1/4"	P-Trap - 20 Ga.	25	7.5"
	700A-1	1-1/4"	P-Trap - 20 Ga. w/10" Wall Tube	25	10.0"
	700BN-1	1-1/4"	P-Trap - 20 Ga. w/Brass Nuts	25	7.5"
	700DF-1	1-1/4"	P-Trap - 20 Ga. w/Deep Flange	25	7.5"
	700DFBN-1	1-1/4"	P-Trap - 20 Ga. w/Deep Flange and Brass Nuts	25	7.5"
	701-1	1-1/4"	P-Trap - 17 Ga.	25	7.5"
	701BN-1	1-1/4"	P-Trap - 17 Ga. w/Brass Nuts	25	7.5"
	701DF-1	1-1/4"	P-Trap - 17 Ga. w/Deep Flange	25	7.5"
	701DFBN-1	1-1/4"	P-Trap - 17 Ga. w/Deep Flange and Brass Nuts	25	7.5"
	701A-1	1-1/4"	P-Trap - 17 Ga. w/10" Wall Tube	25	10.0"
	701ADF-1	1-1/4"	P-Trap - 17 Ga. w/Deep Flange - 10" Wall Tube	25	10.0"

Data is subject to manufacturing tolerances.