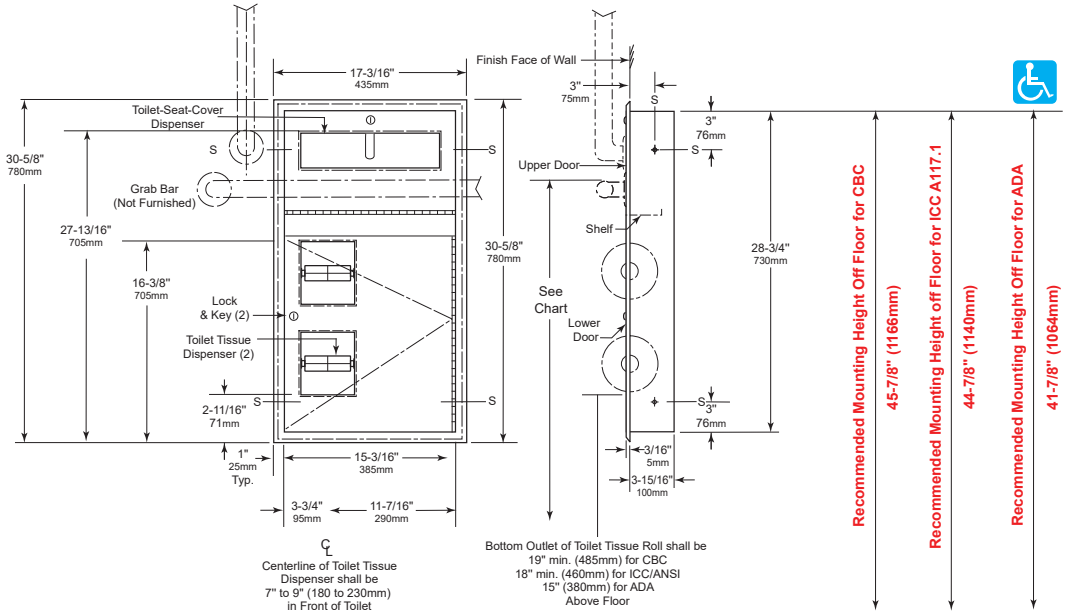




Technical Data

**ClassicSeries®
RECESSED TOILET TISSUE AND
SEAT-COVER DISPENSER - RIGHT
SIDE OF TOILET WHILE SEATED**

B-34745



Centerline of Toilet Tissue Dispenser shall be 7" to 9" (180 to 230mm) in Front of Toilet

Bottom Outlet of Toilet Tissue Roll shall be 19" min. (485mm) for CBC 18" min. (460mm) for ICC/ANSI 15" (380mm) for ADA Above Floor

Grab Bar Top Above Floor	35" (889mm)	35" (889mm)	33" (838mm)
Toilet Tissue Dispenser Bottom of Outlet Above Floor	19" (482mm)	18" (457mm)	15" (381mm)
	CBC	ICC A117.1	ADA

Recommended Mounting Height Off Floor for CBC
45-7/8" (1166mm)

Recommended Mounting Height off Floor for ICC A117.1
44-7/8" (1140mm)

Recommended Mounting Height Off Floor for ADA
41-7/8" (1064mm)



Note: For accessible toilet compartments, please use horizontal recessed or surface -mounted combination dispenser-/disposal-units, B-3091 or B-3092 Series, to comply with ADA 1-1/2" absolute Grab Bar wall spacing.

Rough Wall Opening
16" (405mm) wide
29-1/4" (745mm) high
4" (102mm) minimum recessed depth
See Designer's Notes under Installation for Rough Wall Opening Location Information

MATERIALS:

Cabinet — 18-8, Type-304, heavy-gauge stainless steel. All-welded construction. Exposed surfaces have satin finish.

Flange — 18-8, Type-304, 22-gauge (0.8mm) stainless steel with satin finish. Drawn and beveled, one-piece, seamless construction.

Doors (2) — 18-8, Type-304, 18-gauge (1.2mm) stainless steel with satin finish. One-piece, seamless construction. Secured to cabinet with a full-length stainless steel piano-hinge. Equipped with a tumbler lock keyed like other Bobrick washroom accessories.

Toilet Tissue Dispensers (2) — .100" (2.5mm) thick ABS. Equipped with two theft-resistant, heavy-duty, one-piece, molded ABS spindles.

continued . . .

OPERATION:

Doors unlock with key provided and swing open for filling. Toilet seat-cover dispenser holds 500 single- or half-fold paper covers. Spindles may be removed from cabinet when door is open. Unit holds two standard-core toilet tissue rolls up to 5-1/4" (135mm) diameter (1800 sheets).

Designer's Note: It is recommended that one full toilet tissue roll remain wrapped until the other roll has been depleted to avoid wasting ends of both rolls.

INSTALLATION:

Provide framed rough wall opening 16" wide x 29-1/4" high (405 x 745mm). Minimum recessed depth required from finish face of wall is 4" (102mm). Top of wall opening should be 42-5/8" (1075mm) and installation of 18" vertical grab bar (ICC A117.1-2009) from finish face of floor to allow placement of horizontal grab bar at 33" (840mm) height across front of unit. Allow clearance for construction features that may protrude into rough wall opening from opposite wall. Coordinate with mechanical engineer to avoid pipes, vents, and conduits in wall. If unit projects above top of wainscot, provide aluminum channel or other filler to eliminate gap between flange and finish face of wall. Mount unit in wall opening with shims between framing and cabinet at all points indicated by an S, then secure unit with #8 x 1-1/4" (4.2 x 32mm) sheet-metal screws (not furnished).

Designer's Notes:

1. Recessed B-34745 mounts flush against side wall in accessible toilet compartment has toilet tissue dispenser on left side of unit.
2. Position unit on panel with centerline of toilet tissue dispenser 7" - 9" (180 - 230 mm) in front of leading edge of toilet.
3. For unit to mount of left side of toilet (when seated on toilet) see model B-3474.
4. For visual placement of models inside toilet compartment, refer to Technical Bulletin TB-92.

SPECIFICATION:

Recessed toilet seat-cover and toilet tissue dispenser shall be Type-304 stainless steel with all-welded construction; exposed surfaces shall have satin finish. Toilet tissue dispenser shall be ABS plastic. Flange shall be drawn and beveled, one-piece, seamless construction. Unit shall mount flush against side wall in an accessible toilet compartment to allow clearance for grab bar across front of unit and installation of 18" vertical grab bar (ICC A117.1-2009). Doors shall be one-piece, seamless construction; secured to cabinet with a full-length stainless steel piano-hinge; and equipped with a tumbler lock keyed like other Bobrick washroom accessories. Toilet seat-cover dispenser holds 500 paper covers. Unit shall be equipped with two theft-resistant, heavy-duty ABS toilet tissue spindles that hold standard-core rolls up to 5-1/4" (135mm) diameter (1800 sheets). Spindles shall be removable when door is open.

Recessed Seat-Cover And Toilet Tissue Dispenser shall be Model B-34745 of Bobrick Washroom Equipment, Inc., Clifton Park, New York; Jackson, Tennessee; Los Angeles, California; Bobrick Washroom Equipment Company, Scarborough, Ontario; Bobrick Washroom Equipment Pty. Ltd., Australia; and Bobrick Washroom Equipment Limited, United Kingdom.